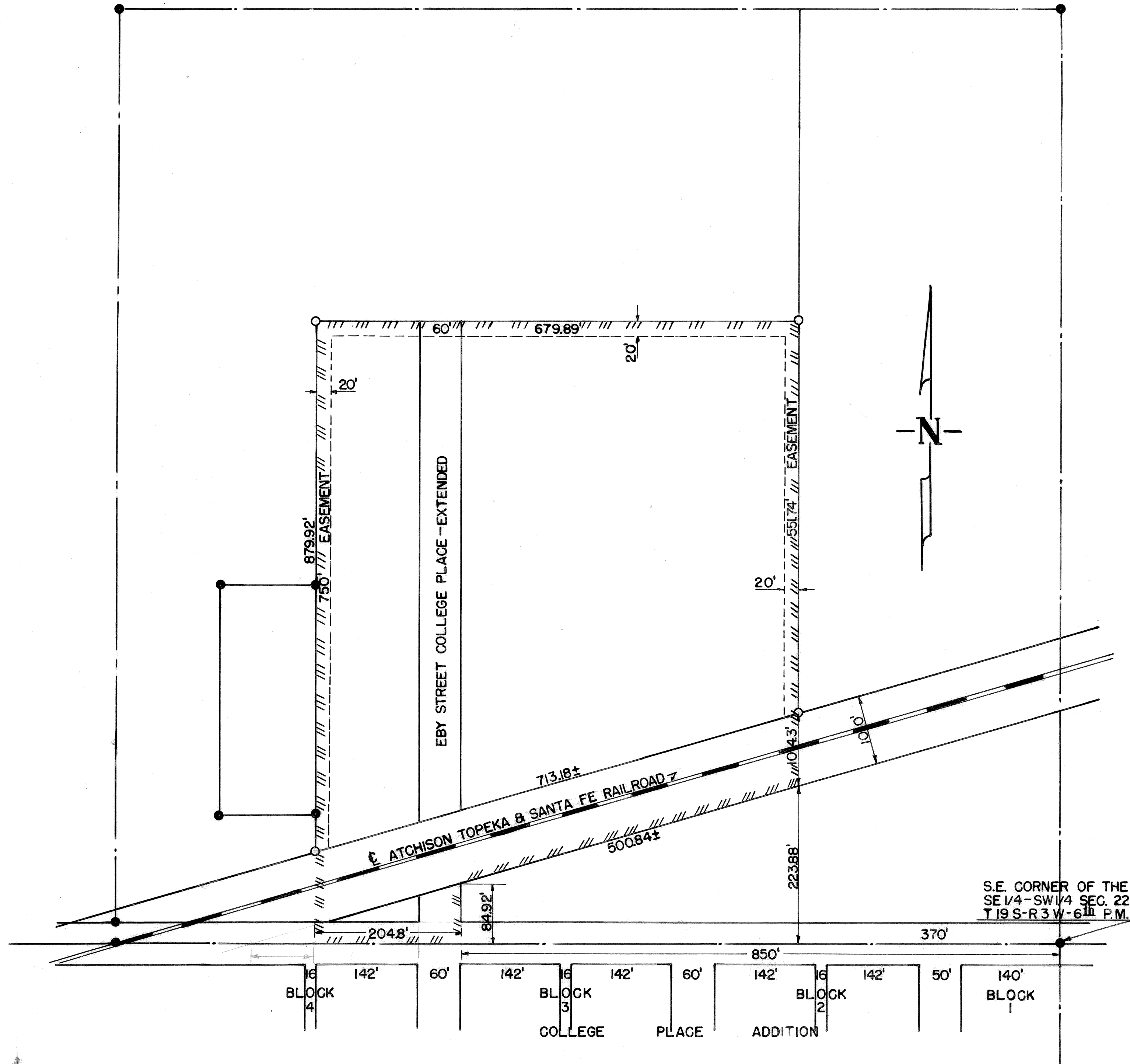


INDUSTRIAL 1ST ADDITION CITY OF McPHERSON KANSAS



DEDICATION:

KNOW ALL MEN BY THESE PRESENTS, THAT THE McPHERSON INDUSTRIAL DEVELOPMENT CO., INC., OWNERS AND PROPRIETORS OF THE LANDS HEREINAFTER DESCRIBED HAS CAUSED SAID LANDS TO BE SURVEYED AND PLATTED UNDER THE NAME OF INDUSTRIAL 1ST ADDITION TO THE CITY OF McPHERSON, KANSAS, AND HAS CAUSED THE SAME TO BE SUBDIVIDED INTO BLOCKS, LOTS, STREETS, AVENUES, DRIVES AND PUBLIC WAYS AS SHOWN ON THE ACCOMPANYING PLAT AND SUCH STREETS, AVENUES, DRIVES AND PUBLIC WAYS ARE DEDICATED TO THE PUBLIC USE.

DESCRIPTION:

A TRACT OF LAND LYING IN THE SE 1/4 SW 1/4 SECTION 22, T 19 S, R 3 W, OF THE 6TH PRINCIPAL MERIDIAN AND DESCRIBED AS FOLLOWS:

BEGINNING AT A POINT 850' FEET WEST OF THE SE CORNER OF THE SE 1/4 SW 1/4 SECTION 22-T 19 S-R 3 W OF THE 6TH PRINCIPAL MERIDIAN AND 30' FEET NORTH OF THE NW CORNER LOT 52 BLOCK 3, COLLEGE PLACE ADDITION TO THE CITY OF McPHERSON; THENCE NORTH 84.92' FEET MORE OR LESS TO THE SOUTH RIGHT-OF-WAY LINE OF THE ATCHISON TOPEKA & SANTA FE RAILROAD; THENCE IN AN EAST-NORTHEASTERLY DIRECTION ALONG THE SOUTH RIGHT-OF-WAY LINE 500.84' FEET MORE OR LESS TO A POINT 370' FEET WEST AND 223.88' FEET NORTH OF THE SE CORNER OF THE SE 1/4 SW 1/4 SECTION 22-T 19 S-R 3 W; THENCE NORTH PARALLEL TO THE EAST LINE OF SAID SE 1/4 SW 1/4 656.04' FEET; THENCE WEST 679.89' FEET; THENCE SOUTH 879.92' FEET TO THE SOUTH LINE OF THE SE 1/4 SW 1/4 SECTION 22-T 19 S-R 3 W; THENCE EAST 204.8' FEET TO THE PLACE OF BEGINNING.

DATED AT McPHERSON, KANSAS October 12, 1959

ATTEST: McPHERSON INDUSTRIAL DEVELOPMENT CO., INC.

SECRETARY Carl M. Hemmick BY H. R. Redbird PRESIDENT

STATE OF KANSAS, COUNTY OF McPHERSON: SS
I FRANCIS D. WAGNER, COUNTY ENGINEER OF McPHERSON COUNTY, KANSAS, DO HERE CERTIFY THAT I DID ON THE 1ST DAY OF OCTOBER, 1959, MAKE A SURVEY OF THE ABOVE DESCRIBED PREMISES, AND THAT THE ACCOMPANYING PLAT IS A TRUE EXHIBIT OF SAID SURVEY.



Francis D. Wagner
COUNTY ENGINEER

STATE OF KANSAS } SS
COUNTY OF McPHERSON }

ON THIS 12th DAY OF October, 1959, BEFORE ME, THE UNDERSIGNED, A NOTARY PUBLIC IN AND FOR THE COUNTY AND STATE AFORESAID, PERSONALLY APPEARED H. R. Redbird PRESIDENT OF THE McPHERSON INDUSTRIAL DEVELOPMENT CO., INC., TO ME KNOWN TO BE THE IDENTICAL PERSON WHO SUBSCRIBED THE NAME OF THE MAKER THEREOF TO THE FOREGOING INSTRUMENT AS ITS PRESIDENT AND ACKNOWLEDGED TO ME THAT HE EXECUTED THE SAME AS HIS FREE AND VOLUNTARY ACT AND DEED, AND AS THE FREE AND VOLUNTARY ACT AND DEED OF SUCH CORPORATION, FOR THE USES AND PURPOSES THEREIN SET FORTH.

GIVEN UNDER MY HAND AND SEAL OF OFFICE THE DAY AND YEAR LAST ABOVE WRITTEN.

Oliver Oakley
NOTARY PUBLIC

MY COMMISSION EXPIRES: Mar. 2, 1960

STATE OF KANSAS } SS
COUNTY OF McPHERSON }

BE IT KNOWN, THAT THE ATTACHED PLAT HAS BEEN SUBMITTED TO ME, AND THAT THE SAME IS HEREBY APPROVED THIS 12th DAY OF OCTOBER, 1959.

Francis B. Anderson
CITY ATTORNEY

STATE OF KANSAS } SS
COUNTY OF McPHERSON }

BE IT KNOWN, THAT THE ACCOMPANYING PLAT HAS BEEN SUBMITTED TO AND APPROVED BY THE PLANNING COMMISSION OF THE CITY OF McPHERSON, KANSAS, ON THIS THE 6th DAY OF October, 1959.

Walter Johnson
CHAIRMAN OF PLANNING COMMISSION
CITY OF McPHERSON

STATE OF KANSAS } SS
COUNTY OF McPHERSON }

BE IT KNOWN, THAT THE ACCOMPANYING PLAT OF THE McPHERSON INDUSTRIAL DEVELOPMENT CO., INC., INDUSTRIAL 1ST ADDITION TO THE CITY OF McPHERSON, KANSAS, WAS SUBMITTED TO THE GOVERNING BODY OF McPHERSON, KANSAS, AND APPROVED ON THE 12th DAY OF October, 1959.

Walter Johnson
MAYOR

ATTEST: John Peterson
CITY CLERK

STATE OF KANSAS } SS
COUNTY OF McPHERSON }

BE IT KNOWN, THAT THE ACCOMPANYING PLAT BY THE McPHERSON INDUSTRIAL DEVELOPMENT CO., INC., OF INDUSTRIAL 1ST ADDITION TO THE CITY OF McPHERSON, KANSAS, WAS SUBMITTED TO THE McPHERSON COUNTY ZONING BOARD AND APPROVED ON THE 7th DAY OF OCTOBER 1959.

Francis D. Wagner
CHAIRMAN OF COUNTY ZONING BOARD

STATE OF KANSAS } SS
COUNTY OF McPHERSON }

BE IT KNOWN, THAT THE ACCOMPANYING PLAT BY THE McPHERSON INDUSTRIAL DEVELOPMENT CO., INC., OF INDUSTRIAL 1ST ADDITION TO THE CITY OF McPHERSON, KANSAS, WAS SUBMITTED TO THE BOARD OF COUNTY COMMISSIONERS OF McPHERSON COUNTY AND APPROVED ON THE 12th DAY OF OCTOBER 1959.

Richard Frisby
CHAIRMAN OF BOARD
COUNTY COMMISSIONERS

ATTEST: Milbert Johnson
COUNTY CLERK

Original Compared with Record

8738
This instrument was filed for record on the 15th day of October, 1959, in book #2 on page 50
300

McPHERSON COUNTY HIGHWAY DEPARTMENT FRANCIS D. WAGNER ENGINEER	
A SURVEY OF A TRACT OF LAND IN THE SE 1/4 SW 1/4 SECTION 22-T 19 S-R 3 W	
OCTOBER 2, 1959	SCALE 1"=100'